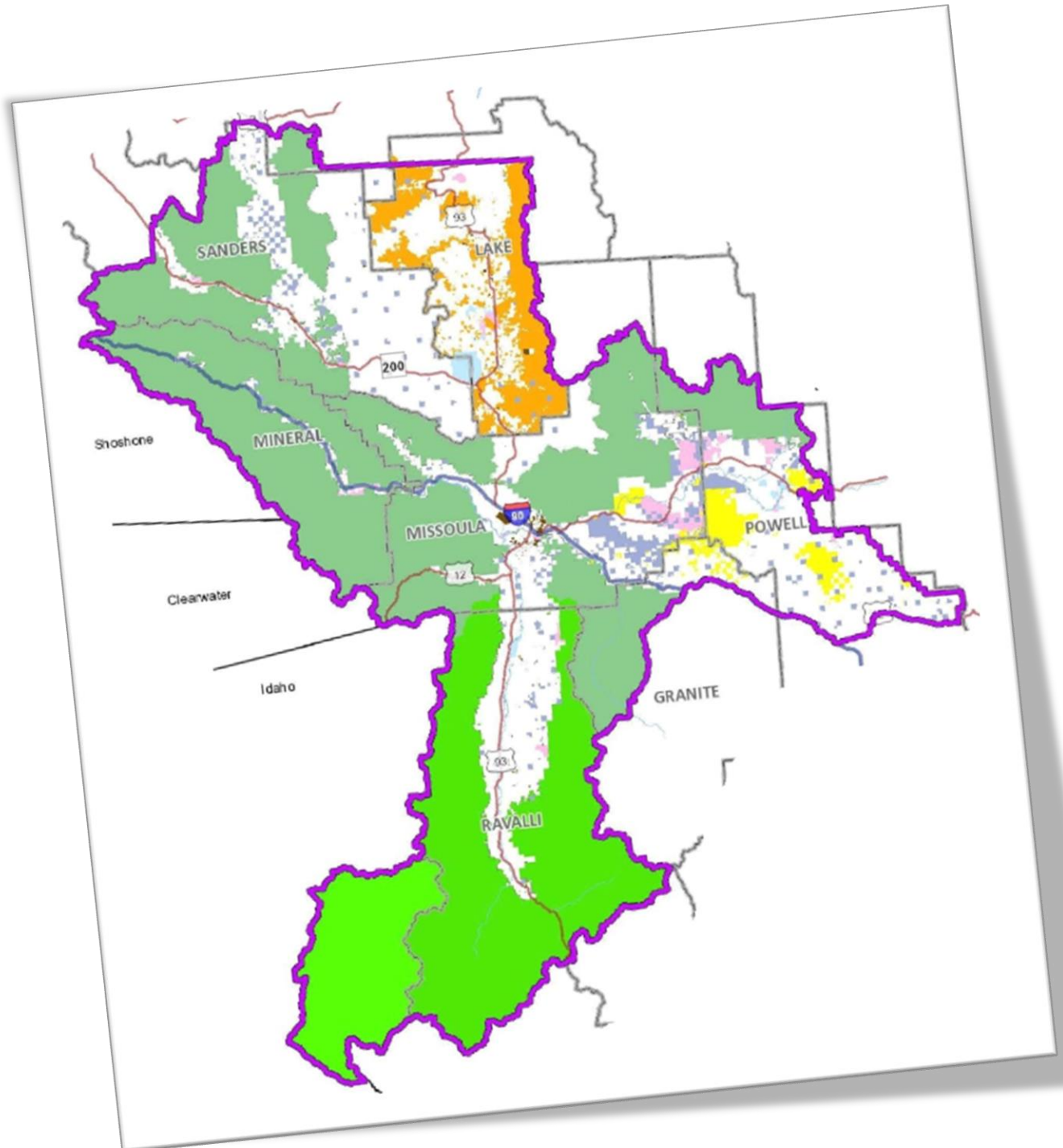


2023-2025 Missoula Area Restrictions & Closures Guide



This Page Intentionally Left Blank

Table of Contents

Missoula Area	4
I. Introduction.....	4
II. Objectives.....	4
III. Cooperators.....	4
IV. Authorities.....	5
Fire Restrictions:.....	5
Area (Small-Scale) Closures:.....	5
Area (Large-scale) Closures:	5
V. Enabling Documents	5
U.S. Department of Interior:	5
U.S. Department of Agriculture	6
Tribal Trust and Tribal Fee Lands:	6
Confederated Salish & Kootenai Tribes and Flathead Agency.....	7
State and Private Forested Lands:	7
State of Idaho	7
State of Montana	7
Montana Counties.....	7
Non-Forested Lands (not within a city boundary and not listed above):	8
VI. Area Location	8
VII. Responsibilities.....	9
VIII. Decision Criteria	9
IX. Implementation Procedures	10
Step One: Fire Prevention Measures	10
Step Two: Fire Restrictions & Closures Measures	10
Area Closures.....	10
Restrictions Process	10
X. Rescission Procedures.....	12
XI. Communications Plan.....	13
Appendix A - Maps	14
Exhibit 1. Missoula Restrictions Area Map.....	14
Exhibit 2. Northern Rockies Coordinating Group Restrictions Area Map	15
Appendix B - Contacts	16
Appendix C – Missoula Area Agency Administrators.....	17
Appendix D – Missoula Area Fire Managers	18
Appendix E – Missoula Area Additional Contacts	19
Appendix F - Media Contacts	20
Appendix G Stage I & II Fire Restrictions	23
STAGE I FIRE RESTRICTIONS	23
STAGE II RESTRICTIONS (Traditional Template)	24
STAGE II RESTRICTIONS (Alternative template based on current USDA Forest Service format).....	25
SMALL-SCALE CLOSURE.....	26
Appendix H Signature Pages	27

MISSOULA AREA

I. Introduction

This Fire Restrictions and Closures Plan is a localized action plan tiered to the Northern Rockies Coordinating Group Restriction and Closure Procedures (dated June 1, 2001 and updated July 2004, May 2007, May 2013, May 2017, and updated on the [NRCG Restrictions & Closures Toolbox](#) in 2022). The Missoula Area Fire Restrictions and Closures Plan details the coordination and decision-making process used to implement fire restrictions and closures in the Missoula Area.

By their nature, fire restrictions and closures impose limitations on the general public, private industry, and enforcement agencies, and should be implemented only after most other prevention measures have been taken. In general, fire restrictions should be considered when high to extreme fire danger exists and is predicted to persist. The implementation and enforcement of any restrictions usually results in an increased workload for agency and local government resources which should be taken into account. Other considerations are the number of human-caused fire starts, the number and types of firefighting resources (both committed and available), potential high-risk occasions (4th of July, etc.), and large fire activity occurring on a unit. Fire restrictions should be one of the last prevention tools to be used.

Area closures (small- and large-scale) are larger than incident-specific closures and could impact numerous activities for the public, forest landowners, industrial operators, and fire agencies. They are implemented only under the most severe conditions, usually when fire danger and fuel conditions are such that firefighter and public safety can no longer be adequately secured. Incident-specific closures are reported by individual agencies and are not covered in this plan.

II. Objectives

- This plan will provide clear direction and responsibility for the coordination and implementation of fire restrictions and area closures within the Missoula Area.
- This plan will provide standardized wording, criteria, and process for implementing and rescinding fire restrictions and small-scale closures.

III. Cooperators

NRCG member agencies, governmental entities, and tribes included in the Missoula Area will be referred to as the “Cooperators” throughout this document. The Cooperators include:

- USDA Forest Service (USFS) – Lolo and Bitterroot National Forests
- Montana Department of Natural Resources and Conservation – Southwestern and Northwestern Land Offices
- Montana Fish, Wildlife and Parks – Region 2
- USDI Bureau of Land Management (BLM) – Missoula Field Office
- Confederated Salish and Kootenai Tribes (CSKT) – National Bison Range & Flathead Reservation
- USDI Fish and Wildlife Service (FWS) – Lee Metcalf National Wildlife Refuge
- Counties: Flathead, Granite, Lake, Mineral, Missoula, Powell, Ravalli, and Sanders

This plan will be updated for accuracy and distributed by June 1 of every third year and will remain valid for a period of three years after signature. Any signatory to this plan may withdraw their participation for the following year by providing written notification to the Area Restrictions Coordinator by December 31.

IV. Authorities

Fire Restrictions:

The authority to implement fire restrictions lies with the Agency Administrators / Tribal Chairperson for each of the Cooperators within the Missoula Restrictions Area. When fire managers for the Cooperators within the Missoula Area reach consensus that restrictions are needed, they will inform their respective Agency Administrator / Tribal Chairperson that the thresholds for implementing fire restrictions have been reached. Working with the Area Restrictions Coordinator, the Cooperators will coordinate the implementation and rescission of restrictions and small-scale closures. The Area Media Coordinator will prepare and send out press releases announcing such actions.

Area (Small-Scale) Closures:

The authority to implement area closures lies with the Agency Administrator / Tribal Chairperson whose land requires the closure. Small-scale closures are used for isolated areas where public and firefighter safety is a concern. When a single jurisdiction is involved, the Agency Administrator / Tribal Chairperson will inform the Area Restrictions Coordinator, who will then inform the other agencies / tribes within the Missoula Restrictions Area. When more than one jurisdiction is involved, the Area Restrictions Coordinator is responsible for overseeing the necessary coordination.

Area (Large-scale) Closures:

The authority to implement large-scale closures lies with the Board of Directors/Agency Administrators for the Northern Rockies Coordinating Group (as listed in Appendix B). Because of the disruption they cause, large-scale closures are instituted only during extended periods of extreme fire danger and fire activity. Such closures have in the past included all lands managed by one or several agencies across the state of Montana. Large-scale closures have required stationing National Guard troops at forest access road sites to enforce the closure. More information may be found in the “NRCG Restriction and Closure Procedures (June 1, 2001 updated July 2004, updated May 2007, updated May 2013, updated May 2017, updated on the [NRCG Restrictions & Closures Toolbox](#) in 2022).”

V. Enabling Documents

U.S. Department of Interior:

- **BLM Lands:** Fire restrictions and small-area closures are invoked and rescinded by “Fire Prevention Order” signed by the Field Office Manager.
 - **Federal Land Policy and Management Act** of 1976 (Title 43, US Code, §1701)
 - Title 43, (CFR) §9212.2(a)
- **BIA Lands and National Bison Range (CSKT):** Covered by tribal order (see below)
- **US Fish and Wildlife Service, Lee Metcalf NWR:** Fire restrictions and small-area closures are invoked and rescinded by “Special Order” signed by the Refuge Manager.

A. Protection Act of September 20, 1922 (42 Stat. 857; 16 USC 594) authorizes the Secretary of the Interior to protect from fire, lands under his/her jurisdiction and to cooperate with other Federal agencies, states, or owners of timber.

D. National Wildlife Refuge System Administration Act of 1966, as amended by the National Wildlife Refuge System Improvement Act of 1997 and the Refuge Recreation Act of 1962. (80 Stat. 927) (16 USC 668dd-668ee) (16 USC 460k-460k4). Governs the administration and use of the National Wildlife Refuge System.

G. Federal Fire Prevention and Control Act of October 29, 1974, et seq. (88 Stat. 1535; 15 USC 2201) as amended. Authorizes reimbursement to State and local fire services for costs incurred in firefighting on Federal property.

Sections 302(b) and 301(a) 43, CFR, Part 9210 (Fire Management) 43, CFR, Part 9212 (Wildfire Prevention)

U.S. Department of Agriculture

- **USFS Lands:** Fire restrictions and small-area closures are invoked and rescinded by “Special Order” signed by the Forest Supervisor or Regional Forester.

General authority for the agency to create and enforce regulations:

16 USC 551 and 16 USC 559 grants authorities to the Secretary of Agriculture to make rules and regulations governing the occupancy and use of Forests and enforce those regulations.

The regulations are found in Title 36, Code of Federal Regulations Part 261 [36 CFR Part 261]. Congress criminalized the violation of these regulations in the act, and violations are now categorized as Class B misdemeanors.

Closure Orders Scope:

36 CFR 261.50 (a) and (b) – Closure Orders for both (a) area and (b) roads and trails.

General Requirements that apply to all closure orders

36 CFR 261.51 – Posting Requirements, etc.

Closure Order Regulations

36 CFR 261.52 – General Fire Restrictions

36 CFR 261.52(e) – Going into or being in an area

36 CFR 261.53 – Special Closures

36 CFR 261.53 (e) – Area closure for health and public safety

Tribal Trust and Tribal Fee Lands:

Fire restrictions and small-area closures are invoked and rescinded by “Tribal Order” signed by the Tribal Chairperson.

Forest restrictions and closures issued by the BIA and Agency Superintendent under authority established in:

25 CFR- Indians, the DOI- Part 620- Wildland Fire Management, and the Indian Affairs Manual-Chapter 90- Wildland Fire Management. Many tribes will issue their own restrictions, bans and closures independent of the BIA. Check with the individual tribe regarding restrictions.

BIA uses CFR 25 § 1.4. Tribes have the ability to develop their own restrictions or adopt those used by county or state governments. BIA Agency programs must typically rely on the Regional Director for the authority to adopt the burning restriction laws of a state. Some types of restrictions may be developed and adopted by a BIA Agency program in consultation with affected tribal government.

Confederated Salish & Kootenai Tribes and Flathead Agency

Forest restrictions and closures are issued by the Tribal Chairperson and Agency Superintendent under authority established in 25 CFR 163.3, 25 CFR 163.28, the Hell Gate Treaty, the Tribal Constitution, and the Tribal Forest Products Harvesting Ordinance 61C. Forest restrictions and closures may be applied on all tribal trust and tribal fee lands within the exterior boundaries of the Flathead Indian Reservation.

State and Private Forested Lands:

Fire restrictions and small-area closures are invoked and rescinded by “Proclamation” signed by the Montana State Forester. Statewide forest closure requires a proclamation by the Governor of the State of Montana.

State of Idaho

Using ICA 38-115 as the authority, the State Board of Land Commissioners developed supplemental rules and regulations that the Director of the Department of Lands is responsible to apply.

Rule IDAPA 20.04.01.060 covers campfires and other burning permits, Rule IDAPA 20.04.01.070 provides for area closures,

Rule IDA.PA 20.04.01.090 allows for invoking smoking limitations, and

Rule IDAPA 20.04.01.120 permits limiting activities to the least dangerous portion of the day.

In dealing with Idaho on joint restrictions, consider that rules 20.04.01.070 and 20.04.01.120 require newspaper publication, and the State may need more lead time than a federal agency. Any restriction implemented by the Director of the Department of Lands will apply to forest and rangelands as defined in ICA 38-101.

State of Montana

The parent law for the regulations is Montana Code Annotated (MCA) 76-13-104. Under these regulations, the Administrator of the Forestry Division may invoke fire restrictions by issuing a proclamation. The Governor must enact a closure under these regulations, not the Administrator, and the regulations provide for the issuance of entry permits. The Montana Governor may also use part of the Military Affairs and Disaster and Emergency Services laws to close an area. MCA 10-3-103(4) defines “disaster” in part, as the occurrence or imminent threat of widespread or severe damage, injury, or loss of life or property resulting from any natural or artificial cause including, but not limited to, fires. MCA 10-3-103(8) defines “emergency” as the imminent threat of a disaster causing immediate peril to life or property that timely action can avert or minimize. The Montana Department of Fish, Wildlife, and Parks’ authority to close or restrict recreational activities on lands controlled by the Department is found in the Administrative Rules of Montana and MCA 87-1-303.

Montana Counties

The Montana constitution, as well as Montana Code Annotated, provides counties in Montana the authority to impose restrictions and closures.

7-33-2212. Activity restrictions in high fire hazard areas. (1) A board of county commissioners may designate areas on private land or on land that is not under the jurisdiction of a municipality or a state or federal agency as high fire hazard areas. Except as provided in 87-3-106(2), in designated high fire hazard areas, the board may require all persons, firms, or corporations present or engaged in any activity in those areas to cease operations or activities or to adjust working hours to less critical periods of the day.

The presiding officer of the board may control ingress and egress into a high fire hazard area if an emergency or disaster is declared under the provisions of Title 10, chapter 3, part 4.

(a) An entity that is conducting official business, an entity having actual residence as a permanent or principal place of abode in the designated area, or an entity engaged in employment that does not present a fire hazard must be allowed ingress and egress unless there is a significant risk to human health or safety.

(b) For the purposes of this section, "official business" includes but is not limited to the functions of governmental agencies and the activities of utilities, cooperatives, and telecommunications providers to operate, construct, repair, and maintain utility facilities that are essential to the public.

7-1-101. Self-government powers. As provided by Article XI, section 6, of the Montana constitution, a local government unit with self-government powers may exercise any power not prohibited by the constitution, law, or charter. These powers include but are not limited to the powers granted to general power governments.

7-33-2205. Establishment of fire season -- permit requirements – reimbursement costs. (1) (a) Subject to the provisions of Title 76, chapter 13, part 1, the county governing body may in its discretion establish controlled burning seasons annually, during which, subject to 76-13-121, a person may not ignite or set a fire, including slash-burning fire, land-clearing fire, debris-burning fire, or open fire within the county protection area on any residential or commercial property, forest, range, or croplands subject to the provisions of this part without having obtained an official written permit or permission to ignite or set a fire from the recognized protection agency for that protection area.

(b) If a person, entity, or representative of a person or entity has entered into a fire hazard reduction agreement pursuant to Title 76, chapter 13, part 4, and is complying with that agreement, open burning may be conducted, subject to 76-13-121, between October 1 and April 30 without obtaining a written permit or permission to set a fire. The person, entity, or representative of a person or entity shall:

obtain air quality and ventilation forecasts before igniting or setting the fire; and

(ii) notify the county of the location of the burn area.

A permit or permission is not needed for recreational fires measuring less than 48 inches in diameter that are surrounded by a nonflammable structure and for which a suitable source of extinguishing the fire is available.

A person who purposely ignites a fire in violation of this section shall reimburse the county governing body or recognized protection agency for costs incurred for any fire suppression activities resulting from the illegal fire, as provided in 50-63-103.

Non-Forested Lands (not within a city boundary and not listed above):

Fire restrictions and small-area closures are invoked and rescinded by "Resolution" signed by the county commissioners.

VI. Area Location

The Missoula Restrictions Area includes the following counties:

- All lands within Mineral, Missoula, and Ravalli counties, excluding the Anaconda-Pintler Wilderness
- Sanders County lands that are southeast of the Kootenai National Forest
- Powell County lands that are south of the Flathead National Forest boundary, west of the Helena-Lewis and Clark National Forest, north of Interstate 90, and north of MT Hwy 12
- Lake and Flathead County lands lying within the Flathead Indian Reservation
- Granite County lands east of the Lolo National Forest Boundary and north of Interstate 90
- In Idaho, those parts of Idaho County that fall on the Bitterroot National Forest

VII. Responsibilities

Area Restrictions Coordinator: responsible for coordination of the fire restrictions/closure process and implementation of this Plan. Duties include monitoring the fire restriction criteria; coordinating discussion among Cooperators; monitoring fire activity, ERC levels, and prevention efforts; notifying the NRCG of the Area's actions; communicating with neighboring areas; coordinating restriction orders/rescinding orders and date of implementation; ensuring that restrictions and rescissions are provided to and updated on the restrictions website at www.MTFireInfo.org; and working closely with the Media Coordinator. The Media Coordinator, who is also vice Area Restrictions Coordinator, will move into the Coordinator position after a term of two years, and will serve as the Area Restrictions Coordinator for a term of two years.

Lead Agency Administrator: designated by the Southwest Zone Fire Managers Board. May be a forest supervisor, DNRC area manager, field office manager, Tribal Chairperson, etc. or a designee. The Lead Agency Administrator is responsible for ensuring that all Agency Administrators/Tribal Chairperson and local government are discussing restrictions and resolving issues within the Missoula Restrictions Area that can't be resolved by the agency/tribal representatives.

Agency/Tribal Fire Manager: usually the agency / tribal fire management officer or designee. These individuals are responsible for monitoring the local fire danger, informing Agency Administrators / Tribal Chairperson, notifying the tribal DES Coordinator and Area Restrictions Coordinator as conditions indicate the need for fire restrictions, and assist as needed to ensure public/agency notification of restrictions.

DNRC Representative: a DNRC employee representative that serves as the State Liaison within the Missoula Restrictions Area. This person is responsible for making appropriate contacts with the Montana Fish, Wildlife and Parks, and notifying the Southwestern Land Office and units, and other state political offices of impending restrictions within the Missoula Area Restrictions and Closures area.

Local Government Representative(s): contact(s) for counties within the Missoula Restrictions Area; keeps county DES and fire wardens informed and acts as liaison for the county commissioners and city councils.

Media Coordinator: provides media contacts and cooperators with press releases and keeps the Media Contact List updated. This person works closely with the Area Restrictions Coordinator to provide adequate and timely public notification of restrictions and closures. The Media Coordinator is chosen by the Southwest Zone Fire Managers and will concurrently serve as the vice Area Restrictions Coordinator. After serving two years as the Media Coordinator, the individual will move into the Area Restrictions Coordinator position.

VIII. Decision Criteria

The Cooperators will continuously monitor weather, fuel conditions and other factors that will indicate when restrictions or closures are warranted. The decision criteria are a combination of all values, not just one or two. Energy Release Component is the primary criteria. Per Missoula Fire Lab subject matter expertise (Matt Jolly -- 2020) the 1000-hour fuel moisture category is used to calculate ERC.

Primary Criteria: ERC (3-day average)

- 90th – 94th percentile: Recommend Stage I
- 95th – 97th percentile: Recommend Stage II
- 98th + percentile: Recommend Area Closure conversation

Other Criteria

- High number of human-caused fire starts including operations fires
- Significant events are occurring or are about to occur: (hunting season, etc.)
- Unusually high visitor use

- Initial attack resources are at draw-down level
- Status and availability of adjacent fire resources are at or reaching draw-down level
- Regional/Area preparedness level is PL3 or higher
- Adverse fire weather conditions and risks are predicted to continue
- Life safety is jeopardized

IX. Implementation Procedures

Step One: Fire Prevention Measures

When Area Fire Managers see that the above-mentioned criteria are being approached, specific prevention measures designed to mitigate human-caused fires will be implemented. The Area Fire Managers will contact the NRCG SW Zone Prevention Coordinator to coordinate a targeted prevention campaign amongst Zone fire prevention personnel and interagency fire managers (e.g., zone fire prevention education team).

Step Two: Fire Restrictions & Closures Measures

If prevention measures do not achieve desired results, discussions on the need for restrictions will be initiated by the Area Restrictions Coordinator. Fire restrictions require a higher degree of coordination among all levels. The Area Restrictions Coordinator will initiate a discussion between interagency fire managers, with neighboring Area Restrictions Coordinators, and the NRCG Restrictions Coordinator. This process must be continuous from the time targeted prevention measures don't achieve a reduction in human-caused fires or when restrictions are first proposed, through the period of implementation, and until the rescinding of all restrictions or closures. Continued use of a zone interagency prevention education team throughout the duration of all restrictions/closures should be strongly considered.

Area Closures

In addition to the criteria for preventative measures and fire restrictions, the following additional criteria need to be evaluated whenever an area closure is being considered:

- ERC (3-day average) is 98th percentile or higher indicate the potential for extreme blowup fire behavior and high potential for loss of life or property due to extreme fire conditions.
- Stage II restrictions are not effective in reducing the number of human-caused fires
- Resources across the geographic area are at a critical shortage level

Small-scale closures may be necessary for isolated areas where public and firefighter safety is a concern. One example is an area around an ongoing incident. Another example is an area of hazardous fuels that is heavily used by the public. Area administrators and/or Tribal Chairpersons from the land where the fire is located will make that decision and coordinate with adjacent agencies/tribes through the Restrictions Coordinator. Keep NRCG Prevention & Education Committee Chair informed, with the intent they will keep NRCG Board of Directors informed.

Large-scale closures are implemented and coordinated by the Geographic Area Administrators. However, there are no established thresholds for initiating them. The GAA assess the situation in a given area or areas, evaluate the impacts of human-caused fires, critical resources, current and expected fire weather and fire behavior. They also consider economic, social, and political impacts of implementing a large-scale closure.

Restrictions Process

Fire managers from each agency will advise their Agency Administrators and public information officers, and alert outlying offices of impending restrictions to provide enough lead time for prevention outreach/signing and for public notification.

The Area Restrictions Coordinator will organize a meeting to allow discussion and a roll call of agency fire managers regarding their unit's preference for implementation of restrictions. Each agency has the authority to implement or rescind fire restrictions and closures unilaterally; there has been past value to unilateral, small group, and area-wide implementation of restrictions. Current conditions will drive the utility of each.

Timing of implementation of restrictions should take into consideration potential logistical issues. Many small community newspapers are only printed once a week. Their deadlines need to be considered, but variable county commissioner meeting days and restrictions group meeting timing make this difficult. If at all possible, decisions made on a Wednesday should be announced on or before the following Monday and implemented no earlier than Tuesday. In other words, the decision should precede implementation by six days at a minimum. Restrictions should not be implemented during the weekend unless there is an emergency.

If one or more Cooperators within the restriction area are considering implementing fire restrictions, they will contact the Area Restrictions Coordinator who will call a meeting of all Cooperators within the Area to discuss the need to start the restrictions process. The decision to go into restrictions will be coordinated with adjacent restriction areas/agencies. The Area Restrictions Coordinator will keep the NRCG Prevention Education Committee Chair informed (contact information is in Appendix B).

When one or more of the Cooperators determine that restrictions should be implemented or that the current restriction stage be raised, the Area Restrictions Coordinator is contacted and immediately organizes a meeting. Missoula Area Fire Managers (as listed in Appendix D) are required to participate, and County Fire Wardens and DES Coordinators (as listed in Appendices D&E) are invited to participate as well. Although the authority to implement fire restrictions lies with each Agency Administrator or Tribal Chairperson, it is customary that their designee attends restrictions coordination meetings.

During this meeting, the Area Fire Managers determine what restriction stage is necessary and a target date for implementation. They have the flexibility to decide if all or only a portion of their administrative area needs to be placed under restrictions. Not all of the Missoula Restrictions Area must move into restrictions at the same time or be in the same restriction stage, but the other cooperators need to be aware of the difference. This situation should be avoided if possible. The public should be able to easily understand the location of the areas put under restrictions or closure.

Since the Bob Marshal Complex and the Selway-Bitterroot/Frank Church Wildernesses are in more than one restriction area, each can be treated as a separate area as agreed to by the National Forests and restriction areas involved.

The time frame for moving in and out of restrictions and closures should be sufficient to allow for public and agency notification. Enough time must be given in order to allow for preparation and coordinated issuance of the enabling documentation, exemptions, prevention signage, public notification, etc. For restrictions implementation, six days is the preferred minimum. Small-area closures are usually implemented in a more rapid fashion as the situation dictates. Recissions are usually enacted immediately.

Coordination with adjacent areas and other affected agencies in the restriction area that will be impacted (disaster and emergency services, law enforcement entities, etc.) is essential. The Area Restrictions Coordinator will notify other Area Restrictions Coordinators of the decision in order to coordinate prevention signage and public information. The Restrictions Coordinator will also notify large landowners such as The Nature Conservancy and Green Diamond Resource Company, as well as utility companies for whom operations may be affected by restrictions and closures.

Fire prevention signage must be coordinated so the message is in line with the restrictions as they are implemented. Signage will be done by the agency responsible for fire protection.

After the decision has been made to go into restrictions or closures, all employees of all Area Cooperators should be notified immediately by their agency. The affected political offices (state and county) should also be contacted immediately. This will be the responsibility of the DNRC and local government representatives.

The next step is to issue the appropriate enabling documentation. To provide for interagency standardization across various ownerships, the wording for the two restriction stages as set forth in the “[NRCG Restriction and Closure Guidelines](#)” will be used in all restriction orders (See Appendix G). Each agency shall have enabling documentation pre-written with the standardized wording. The Agency Administrator or Tribal Chairperson is responsible for signing the restrictions and small-scale closure documents and the NRCG Agency Administrator or BIA Representative is responsible for signing the large-scale closure documents.

Appendix G contains the standardized wording for the two restriction stages as found in the “[NRCG Restriction and Closure Guidelines](#).”

News releases will be issued immediately so the public has as much advance notice as possible, one day at minimum. This is the responsibility of the Area Media Coordinator. News releases, brochures, Public Service Announcements (PSA), etc., will be pre-written and agreed upon by all agencies in the Restriction Area. The use of a fire information/media team to coordinate restriction press releases could be employed if deemed necessary.

Each Cooperator in the restrictions area will email a **signed** 508 compliant **pdf** of their restriction order, with designated campfire sites attached if applicable, to the Area Restrictions Coordinator immediately after the order is signed. The Restrictions Coordinator is responsible for providing Orders and Proclamations to the MTFireInfo.org coordinating entity in a timely manner. Orders and Proclamations will be available to all Cooperators via the website www.mtfireinfo.org. If Cooperators go into closure, a list of exemptions will be attached to the Closure document and sent to the Area Restrictions Coordinator. The Restrictions Coordinator will ensure that restrictions are current and correct on the restrictions web site: www.mtfireinfo.org.

The Area Restrictions Coordinator or Media Coordinator will distribute (via email) minutes of conference calls and summaries of decisions made by the coordinating group and the proposed timetable for implementing restrictions and small-scale closures.

X. Rescission Procedures

As with the implementation procedures, when one or more of the Cooperators determine that restrictions should be rescinded or that the current stage be reduced, the Area Restriction Coordinator will be contacted, and they will organize a meeting, conference call, or video teleconference (recommended because NRCG Restrictions Webpage is a very effective communications tool and the meeting can serve as a validation tool for the information that is presented to the public available at www.mtfireinfo.org).

When conditions subside, the same decision criteria used to implement the restrictions will be used and discussed to rescind the standing order(s), proclamation(s) and resolution(s).

The rescission of fire restrictions or closures requires rescinding documentation similar to that identified above in [Enabling Documentation](#). The Restriction Area should plan implementation and rescission of restrictions for predicted long-term conditions and should be based upon the best available science. Care should be taken to not react to every small fluctuation in risk, weather, and fire danger; thus avoiding an up-down, up-down syndrome which could result in confusion and lack of support from our publics.

XI. Communications Plan

Notification of key contacts and the general public concerning the implementation of fire restrictions or closures is essential and should be accomplished as soon as possible and before implementation so as to avoid confusion. Contacts need to be told why, when, and to what degree they will be affected, and refer to www.MTFireInfo.org for a fire restrictions map and specific information.

When weather conditions or special circumstances indicate a very high potential for devastating fires to occur, fire restrictions or closure will likely be imposed. When conditions warrant fire restrictions be implemented or changed, each Agency/Tribal Representative will advise their supervisors. All employees should be advised of the situation. The special order will be prepared and signed with enough lead-time to provide proper notifications and prepare for appropriate prevention signing. The Area Restrictions Coordinator will ensure that orders are published at www.MTFireInfo.org.

The Missoula County Fire Protection Association (MCFPA) and/or other approved cooperator associations (Fire in the Root Council, Mineral County Fire Council, prevention and education teams, Incident Management Teams assigned within the Area, etc.) may also publish information on fire restrictions and closures. Key contacts will be advised in a timely manner about decisions concerning implementation or rescission of restrictions or closure, see Appendix E (Contact List). This can best be handled through group e-mail process.

Each Cooperator is responsible for notifying special use permittees and contractors such as outfitters and timber companies doing business on their land. The DNRC will notify state offices and the local government representative will notify county offices.

The general public will be notified through a combination of media news releases, PSAs, signage, and personal contacts. The Missoula Area Media Coordinator will notify all surrounding media outlets to help in notification of the public. The Media Coordinator will have press release templates created before the start of the fire season. Press releases will be sent to Missoula Area Fire Managers for approval before they are sent to the media. Only one press release will be written for the Missoula Area.

Appendix A - Maps

Exhibit 1. Missoula Restrictions Area Map

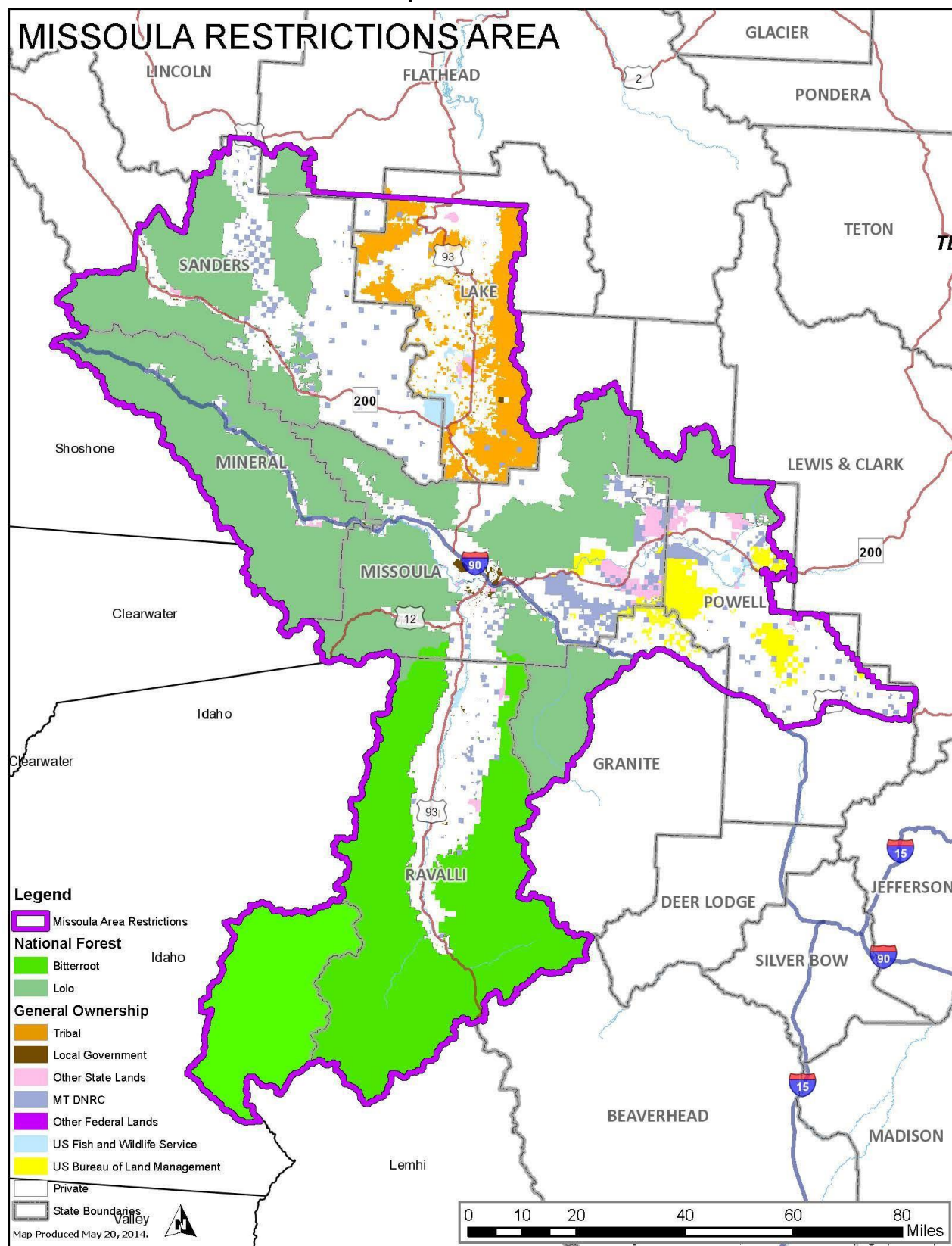
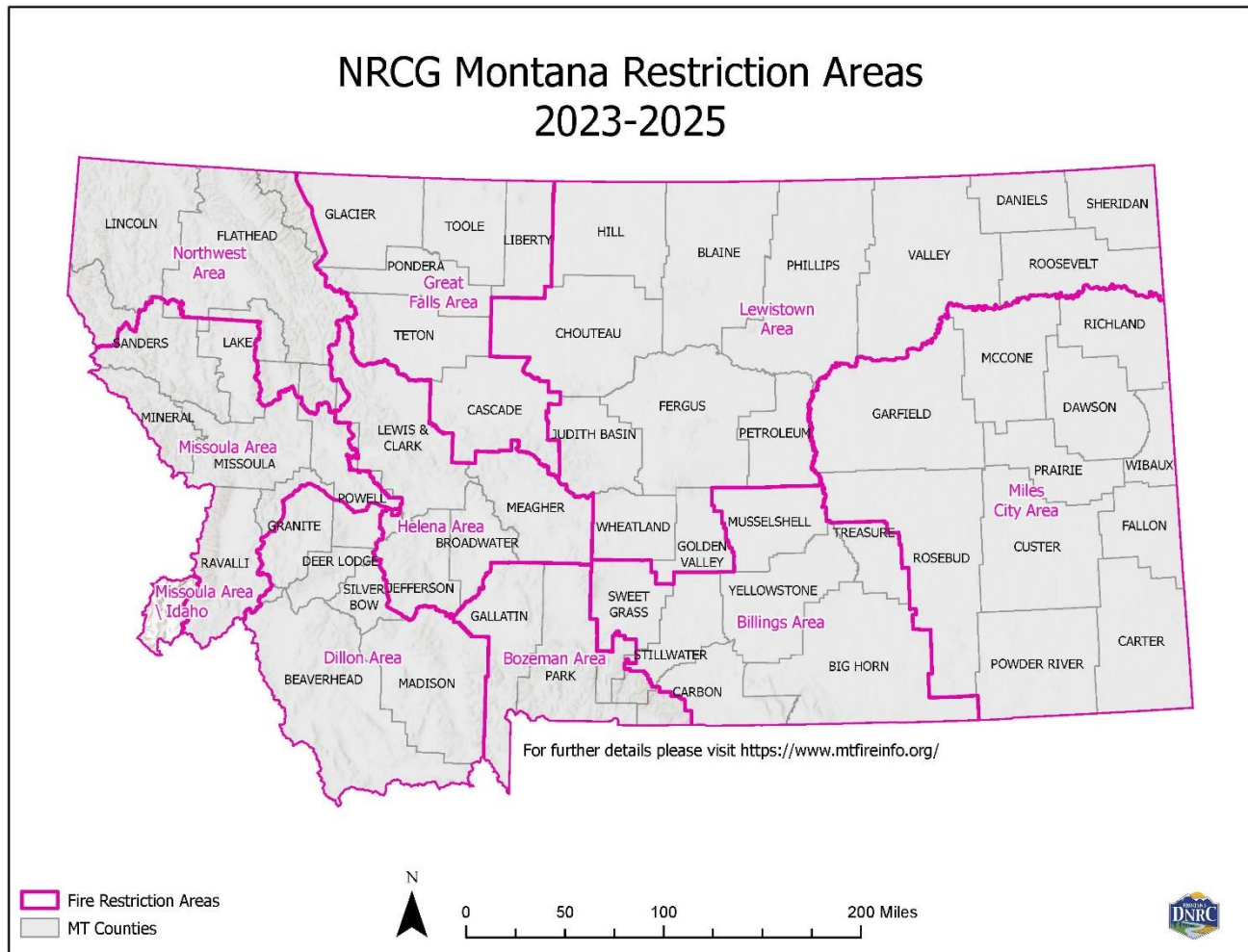


Exhibit 2. Northern Rockies Coordinating Group Restrictions Area Map



Appendix B - Contacts

Missoula Area Agency Administrators / Representatives

Table 1 Northern Rockies Coordinating Group Board of Directors

AGENCY ADMINISTRATOR	AGENCY/TRIBE	PHONE NUMBER
Rich Cowger	Fire Chief's Association	406-322-4302
Bryan Mercier	Bureau of Indian Affairs, Northwest Regional Office	503-231-6702
Matt Hall	Montana DNRC Fire Bureau Chief	406-544-5102
Craig Glazier	USFS R1 Fire & Aviation Director	208-659-1131
Aaron Thompson	Bureau of Land Management, Montana State Office (Billings)	406-896-2919
Paul Cerda	National Park Service	907-829-7261
Jake Ganieany	Montana DES-Bureau Chief	406-417-9234
Patrick Lonergan	Montana Fire Wardens Association	406-599-7881
Josh Harvey	Idaho Department of Lands	208-568-0441
Tate Fischer	US Fish & Wildlife Service	720-635-1977
Steve Holton	Montana Sheriff's and Peace Officers Association	406-375-4060
Pam Jolly	NRCG Program Support Specialist	406-540-3881
Chris Johnson	NRCG Fire Prevention & Education Committee Chair	406-529-7751

Table 2 Southwest Montana Zone Fire Managers

BOARD MEMBER	AGENCY/TRIBE	WK #	CELL #	Email
Brad Bergman	BLM Western Montana District	896-2940	715-617-2738	bbergman@blm.gov
Mark Wilson	Bitterroot National Forest	375-2610	360-1154	mark.e.wilson@usda.gov
Scott Schrenk	Lolo National Forest	329-1039	250-0354	Scott.schrenk@usda.gov
Kevin Beck	Fish Wildlife Service Region 6	N/A	N/A	kevin_beck@fws.gov
Adriane Beck	Missoula County OEM Representative	258-4469	830-0974	abeck@missoulacounty.us
Karl Nikoleyczik	MT DNRC, Southwestern Land Office	542-4263	240-4973	karl.nikoleyczik@mt.gov
Dylan Kopitzke	MT DNRC, Northwestern Land Office	751-2247	549-9549	dkopitzke@mt.gov
Ron Swaney	Confederated Salish and Kootenai Tribes	676-2550 x6405	531-9777	ron.swaney@cskt.org
Maria Helterline	Missoula Dispatch Center Manager	829-7050	406.865.0530	maria.helterline@usda.gov

Appendix C – Missoula Area Agency Administrators

Table 3 Missoula Area Agency Administrators

AGENCY / TRIBAL ADMINISTRATOR	AGENCY / TRIBE	PHONE	CELL	EMAIL ADDRESS
Carolyn Upton, Forest Supervisor	Lolo National Forest	329-3797	499-2857	carolyn.upton@usda.gov
Matt Anderson, Forest Supervisor	Bitterroot National Forest	363-7121		matthew.anderson3@usda.gov
Bryan Mercier, NW Regional Director	BIA, CSKT	503-231-6702		Bryan.mercier@bia.gov
Greg Poncin, Area Manager	Montana DNRC-NWLO	751-2242	250-4439	gponcin@mt.gov
Mike O'Herron, Area Manager	Montana DNRC-SWLO	542-4261	240-4199	moherron@mt.gov
Erin Carey, Missoula Field Manager	BLM, Western Montana District	329.3717	273.1842	ecarey@blm.gov
Tom Reed, Refuge Manager	USFWS Lee Metcalf NWR	777-5552		tom_reed@fws.gov

Appendix D – Missoula Area Fire Managers

Table 4 Missoula Restrictions Area Agency Administrators and Fire Managers

AGENCY / TRIBE	AGENCY REPRESENTATIVE	PHONE	CELL	EMAIL ADDRESS
Conf. Salish and Kootenai Tribes	Ron Swaney, Fire Management	676-2550 x6405	531-9777	ron.swaney@cskt.org
Conf. Salish and Kootenai Tribes	CT Camel, PIO		370-8911	CT.Camel@cskt.org
Flathead County	Lincoln Chute, Fire Warden	758-5563	270-5634	lincoln.chute@flatheadoes.mt.gov
Granite County	Sean O'Connor, Fire Warden	N/A	949-0468	oconnor59832@gmail.com
Lake County	Mark Clary, Fire Warden	883-7253	407-3886	mclary@lakemt.gov
Mineral County	Mary Jo Lommen, Fire Warden	N/A	822-2500	maryjolommen@gmail.com
Missoula City	Gordy Hughes, Chief	552-6210	207-0256	firewildland@ci.missoula.mt.us
Missoula County	Adriane Beck, Fire Warden	258-3632	830-0974	abeck@missoulacounty.us
W. MT DES	Jake Ganieany, Bureau Chief	324-4766	417-9234	jake.ganieany@mt.gov
W. MT DES	Delila Bruno, Division Administrator	324-4766	N/A	dbruno@mt.gov
MT DNRC - NWLO	Dylan Kopitzke, Fire Program Mgr	751-2247	250-4599	dkopitzke@mt.gov
MT DNRC - SWLO	Karl Nikoleyczik, Fire Program Mgr	542-4263	240-4973	Karl.nikoleyczik@mt.gov
MT DNRC - SWLO	Kristin Mortenson, R& C Coordinator	542-4321	381-7451	kristin.mortenson@mt.gov
Montana FWP	Vivaca Crowser, Information Officer	542-5518	240-2004	vcrowser@mt.gov
Montana FWP	Officer Randy Arnold, Region 2 Sup	542-5504	552-8708	rarnold@mt.gov
Montana FWP	Loren Flynn, Recreation Manager	542-5517	360-9818	lflynn2@mt.gov
Powell County	Andy Scharf, Fire Warden	N/A	498-1400	deerlodgedf@gmail.com
Powell County	William Baker, Deputy Fire Warden	N/A	793-5746	bakes@blackfoot.net
Powell County	Brant Pierson, Chief Deer lodge FD	N/A	N/A	brant.pierson@bnsf.com
Ravalli County	Brad Mohn, Fire Warden	N/A	360-4379	bmohn@cityofhamilton.net
Sanders County	Bill Naegeli, Fire Warden	827-6955	827-2227	bnaegeli@co.sanders.mt.us
USFS - Bitterroot NF	Mark Wilson, FFMO	375-2610	360-1154	mark.e.wilson@usda.gov
USFS - Bitterroot NF	Matt Young, AFMO	363-7149	493-4391	matthew.young@usda.gov
USFS - Bitterroot NF	Fire Prevention			
USFS - Lolo NF	Scott Schrenk, FFMO	329-1039	250-0354	scott.schrenk@usda.gov
USFS - Lolo NF	Greg Jacobson, AFMO	329-1089	240-4974	gregory.jacobson@usda.gov
USFS – Lolo NF	Anna Henderson, Fire Prevention		239-4904	Anna.m.henderson@usda.gov
USDI - Missoula Field Office-BLM	Erin Carey, Field Manager	329-3717	273-1842	ecarey@blm.gov
USDI - Missoula Field Office-BLM	Maggie Ward	N/A	N/A	mward@blm.gov
USDI - Missoula Field Office-BLM	Jodi Wetzstein	N/A	N/A	jwetzstein@blm.gov
US Fish & Wildlife Service	Kevin Beck	N/A	N/A	kevin_beck@fws.gov

Appendix E – Missoula Area Additional Contacts

Table 5 Missoula Area Additional Contacts

AGENCY / TRIBE	NAME	PHONE	CELL	EMAIL ADDRESS
BLM Area Restrictions Representative	Brad Bergman	896-2940	715-617-2738	bbergman@blm.gov
Dillon Area Fire Restrictions Coordinator	David Mosher	683-3991	491-0346	david.mosher@usda.gov
CS & K Tribes	Dale Nelson	676-2550 x6414	N/A	dalesn@cskt.org
Disaster & Emergency Services (DES) - Western Montana	Ryan Lee - Supervisor	417-9237	N/A	RyanLee@mt.gov
DES - Western Montana				
DES County Coordinator - Flathead	Lincoln Chute	758-5563	270-5634	lincoln.chute@flatheadoes.mt.gov
DES County Coordinator – Flathead (Alt)	Juanita Nelson	758-5504	249-6913	Juanita.nelson@flatheadoes.mt.gov
DES County Coordinator - Granite	Jackie Bolster	370-5060	N/A	jbolster@co.granite.mt.us
DES County Coordinator - Lake	Mark Clary	883-7253	407-3886	mclary@lakemt.gov
DES County Coordinator - Mineral	Amy Lommen	822-3564	830-0235	alommen@co.mineral.mt.us
DES County Coordinator - Missoula	Adriane Beck	258-3632	830-0974	abeck@missoulacounty.us
DES County Coordinator - Missoula (Alt)	Ken Parks	258-4469	493-8401	kparks@missoulacounty.us
DES County Coordinator - Powell	Heather Gregory			Hgregory@powellcountymt.gov
DES County Coordinator - Ravalli	Erik Hoover	375-6657	207-8039	ehoover@rc.mt.gov
DES County Coordinator - Sanders	Bill Naegeli	827-6955	827-2227	bnaegeli@co.sanders.mt.us
Bitterroot Dispatch Center	BRC	363-7133	N/A	SM.FS.mtbrc@usda.gov
Missoula Dispatch Center	MDC	829-7070	N/A	SM.FS.mtmdc@usda.gov
Missoula Rural Fire District	Chris Newman, Chief	549-6172	239-6536	cnewman@mrfdfire.org
Frenchtown Rural Fire District	Joe Calnan, Chief	626-5791	240-5759	icalnan@frenchtownfire.org
Missoula County Fire Protection Association	Ken Parks, Chair	N/A	493-8401	kparks@missoulacounty.us
Montana DNRC - Central Land Office FMO	Hoyt Richards	458-3501	N/A	hrichards@mt.gov
Montana DNRC - Northwestern Land Office Plains Unit FMO	Christopher Beeks	826-4726	N/A	Christopher.beeks@mt.gov
Montana DNRC - Clearwater Unit FMO	A.J. Angelo		544-3715	Amadeo.angelo@mt.gov
Montana DNRC - FPB	Julia Berkey	542-4221	361-5947	Julia.berkey@mt.gov
Montana DNRC – Missoula Unit FMO	Ash Burwick	N/A	542-4312	aburwick@mt.gov
Montana DNRC – Fire Information	Anna Lau	542-4204		Anna.lau@mt.gov
Northern Rockies Coordinating Group Restrictions Coordinator (USFS)	Chris Johnson	N/A	529-7751	christopher.johnson5@usda.gov
Northwest Montana Area Fire Restrictions Coordinator	Keith VanBroeke	N/A	261-9470	keith.vanbroeke@usda.gov
Northwestern Energy	Gary Palm	Dispatch 497-2030	N/A	gary.palm@northwestern.com
Northwestern Energy, Fire Mitigation	Shane Colman			shane.colman@northwestern.com
The Nature Conservancy	Steve Kloetzel	N/A	214-2036	skloetzel@tnc.org
Green Diamond Resource Company	Brian Hobday, MT Area Mgr.	858-3512	208-290-7170	Brian.hobday@greendiamond.com
Missoula Electric Cooperative	Nick Labbe	541-6341	N/A	nickl@meccoop.com
Asplundh		208-452-0510		reg172@asplundh.com
Bozeman Area Restrictions Coordinator	Greg Coleman (Park County)	823-0823	N/A	gcoleman@parkcounty.org
Bob Marshall Complex Coordinator	Jim Flint (FNF-Spotted Bear)	387-3845	758-5376	jim.flint@usda.gov
Helena Area Restrictions Coordinator	Willie Knudsen		969-7745	william.knudsen@usda.gov
Helena NF - Fire Staff	Kendal Wilson	791-7718	836-2239	kendal.wilson@usda.gov
Helena NF - Public Affairs Officer	Chiara Cipriano	N/A	594-6497	chiara.cipriano@usda.gov
Lolo NF - Public Affairs Officer	Kate Jerman	N/A	552-7944	katelyn.jerman@usda.gov
Lolo NF – Fire Information Officer	Anna Bateson		360-5638	anna.bateson@usda.gov
Lolo NF - Webpage	Vacant	N/A	N/A	kelsey.mccartney@usda.gov
Bitterroot NF – Public Affairs Officer	Tod McKay			Tod.mckay@usda.gov
Montana FSTS Daily Fire Blog	N/A	N/A	N/A	fstsdaailyatest@montana.edu
MtFireInfo.org	Julia Berkey	N/A	361-5947	julia.berkey@mt.gov

Appendix F - Media Contacts

Updated: May 2023

Missoula County

Table 6 Missoula County Media Contacts

Media	Address	Contact	Phone	Fax	Deadline	Email
The Missoula Current	P.O. Box 2935 Missoula, MT 59806 Physical Address 1100 W. Kent Ave Missoula, MT 59801	Laura Lundquist, environmental reporter	274-2426	N/A	Flexible digital publication, 4 pm each day	environment@missoulacurrent.com
The Missoula Current	P.O. Box 2935 Missoula, MT 59806 Physical Address 1100 W. Kent Ave Missoula, MT 59801	Martin Kidston, editor	830-5035	N/A	Flexible digital publication, 4 pm each day	editor@missoulacurrent.com
Missoulia	P.O. Box 8029 Missoula, MT 59807	Rob Chaney	523-5382	523-5294	By 2230/2300, unless very urgent; flexible	newsdesk@missoulia.com rchaney@missoulia.com
Missoulia	P.O. Box 8029 Missoula, MT 59807	News Desk		N/A	By 2230/2300, unless very urgent; flexible	newsdesk@missoulia.com
Seeley Swan Pathfinder	P.O. Box 702 Seeley Lake, MT 59868		677-2022	677-2741 677-3300	Monday, 1400	pathfinder@seeleylake.com
KUFM 89 FM	Missoula, MT	Aaron Bolton	612-799-1269	N/A	N/A	aaron@mtpr.org
KUFM 89 FM	Missoula, MT	Ed O'Brien	243-4931	243-3299	N/A	edward.obrien@mtpr.org
KUFM 89 FM	Missoula, MT	Corin Cates-Carney	243-4931	N/A	N/A	contact@mtpr.org
KBGA 89.9 FM	University. Center 208 University of MT Missoula, MT 59812	Alanya Cherkas General Manager	243-6758	243-6428	N/A	gm@kbga.org
KYLT 1340 AM KZOQ 100.1 FM KXDR 92.7 FM KGGL 93.3 FM KGRZ 1450 AM	Towns Square Media 3250 South Reserve Suite 200 Missoula, MT 59801	Scott Richman, Theresa Schanzle Peter Christian			N/A	Scott.Richman@townsquaremedia.com Theresa.Schanzle@townsquaremedia.com peterchristian@townsquaremedia.com
KMSO 102.5 FM (Limited news coverage)	725 Strand Ave Missoula, MT 59801	Sheila Callahan, General Manager	542-1025	N/A	N/A	sheila@mtnbdc.com mountainmorningshow.mtnbdc.com
KLCY 930 AM KYSS 94.9 FM KBAZ 96.3 FM KGVO 1290 AM	3250 South Reserve Suite 200 Missoula, MT 59801	Janette McDonald Ashley Warren	721-1292	542-2329	N/A	kgvnewsroom@townsquaremedia.com Ashley.warren@townsquaremedia.com
KPAX TV Channel 8/CBS	1049 W. Central Missoula, MT 59801	Newsroom	542-4400	N/A	N/A	news@kpax.com
KECI TV Channel 13/NBC	340 W. Main St. Missoula, MT 59801	Kevin Maki Press Releases	721-5624	721-6791	N/A	ml-Missoula-KECI-News@sbgvtv.com
KTMF ABC Fox Missoula	2200 Stephens Ave. Missoula, MT 59801	Newsroom	453-4370		N/A	newsroom@kfbt.com abcfoxmontana.com
MCAT Public TV			542-6228	721-6014	N/A	mcate@mcate.org

GRANITE COUNTY

Table 7 Granite County Media Contacts

Media	Address	Contact	Phone	Fax	Deadline	Email
Phillipsburg Mail	Phillipsburg, MT	Michael Stafford, Editor	859-3223	859-3690	Monday 1700	news@pburgmail.com

LAKE COUNTY

Table 8 Lake County Media Contacts

Media	Address	Contact	Phone	Fax	Deadline	Email
Lake County Leader	213 Main St. Polson, MT	Lisa Broadt	883-4343	883-4349	Thursday, Monday; 1200	reporter3@leaderadvertiser.com editor@leaderadvertiser.com
Char-Koosta News	Pablo, MT	Kim Swaney	675-3000	675-3001	Thursday, Tuesday 1630	charkoosta@cstk.org
Daily Interlake	Kalispell, MT	Matt Baldwin, Managing Editor	758-4447	752-6114	N/A	mbaldwin@dailyinterlake.com
Daily Interlake	Kalispell, MT	Lynette Hintze, News Editor	758-4447	752-6114	N/A	lhintze@dailyinterlake.com
Daily Interlake	Kalispell, MT	Scott Shindledecker, Outdoors	758-4447	752-6114	N/A	sshindledecker@dailyinterlake.com
KQRK 92 FM KERR 750 AM	581 N. Reservoir Polson, MT	N/A	883-5255	883-4441	N/A	info@andersonbroadcasting.com
Valley Journal	P.O. Box 326 Ronan	Karen Peterson	N/A	N/A	Weekly	vjeditor@valleyjournal.net news@valleyjournal.net

MINERAL COUNTY

Table 9 Mineral County Media Contacts

Media	Address	Contact	Phone	Fax	Deadline	Email
Mineral Independent	Plains, MT	Monty Turner	826-3402	826-5577	Monday 1200	editor@vp-mi.com
Mineral Independent	Plains, MT	Laurie Ramos, General Manager	826-3402	826-5577	Monday 1200	lramos@leaderadvertiser.com

POWELL COUNTY

Table 10 Powell County Media Contacts

Media	Address	Contact	Phone	Fax	Deadline	Email
Silver State Post	Deer Lodge, MT	Steve Waggener	846-2424	846-2453	Friday 1700	news@sspmt.com
KQRV FM radio	Deer Lodge, MT	N/A	846-1100	846-1636	N/A	mail@kbwopr.com

RAVALLI COUNTY

Table 11 Ravalli County Media Contacts

Media	Address	Contact	Phone	Fax	Deadline	Email
Ravalli Republic Newspaper	232 W. Main St. Hamilton, MT 59840	Jessica Abel	363-3300	363-1767	Three days in advance	editor@ravallirepublic.com
Bitterroot Star	215 Main St Stevensville, MT 59870	Michael or Victoria Howell	777-3928	777-4265	Mondays	editor@bitterrootstar.com
KLYQ AM KBMG	3250 South Reserve Missoula, MT 59801	Steve Fullerton	363-3010	363-6436	N/A	stevefullerton@townsquaremedia.com

SANDERS COUNTY

Table 12 Sanders County Media Contacts

Media	Address	Contact	Phone	Fax	Deadline	Email
Sanders County Ledger	Thompson Falls, MT	Anne Wooden	827-3421	827-4375	Thursday, Tuesday 1030	editor@scledger.net
Clark Fork Valley Press	P.O. Box 667 Plains, MT 59859	Cheri Minemyer Office Manager	826-3402	826-5577	Monday 1200	editor@vp-mi.com cminemyer@vp-mi.com

OTHER MEDIA

Table 13 Other Media Contacts

Media	Address	Contact	Phone	Fax	Deadline	Email
Associated Press	Helena, MT	N/A	442-7440	442-5162	N/A	apmontana@ap.org
Spokesman Review	Spokane, WA	N/A	(509) 459-5000	(509) 459-5482	N/A	news@spokesman.com
Bugle Magazine	Missoula, MT	Dan Crockett	800-255-5355	N/A	N/A	crockett@rmef.org
Kaimin	Missoula, MT	Griffen Smith	243-4310	N/A	N/A	editor@montanakaimin.com

Appendix G Stage I & II Fire Restrictions

STAGE I FIRE RESTRICTIONS

The Following Acts Are Prohibited Until Further Notice:

1. Building, maintaining, attending, or using a fire or campfire unless as noted in the exemptions below.
2. Smoking, except within an enclosed vehicle or building, a developed recreation site or while stopped in an area at least three feet in diameter that is barren or cleared of all flammable materials.

Stage I Exemptions:

1. Persons with a written permit that specifically authorizes the otherwise prohibited act.
2. Persons using a device solely fueled by liquid petroleum or LPG fuels that can be turned on and off. Such devices can only be used in an area that is barren or cleared of all overhead and surrounding materials within three feet of the device.
3. Persons conducting activities in those designated areas where the activity is specifically authorized by written posted notice.
4. Any Federal, State, or local officer or member of an organized rescue or firefighting force in the performance of an official duty.
5. All land within a city boundary is exempted.
6. Other exemptions unique to each agency/tribe.

Violations:

- You could be fined up to \$5,000 individually or \$10,000 for an organization and imprisoned up to 6 months for violating restrictions and closures.
- You can be held liable for all suppression costs and damages if you start a fire.

STAGE II RESTRICTIONS (Traditional Template)

The Following Acts Are Prohibited Until Further Notice:

1. Building maintaining, attending, or using a fire or campfire.
2. Smoking, except within an enclosed vehicle or building, a developed recreation site or while stopped in an area at least three feet in diameter that is barren or cleared of all flammable materials.
3. The following acts are prohibited from 1:00 p.m. to 1:00 a.m.:
 - a. Operating any internal combustion engine.
 - b. Welding, or operating acetylene or other torch with open flame.
 - c. Using an explosive

A one-hour foot patrol in the work area is required following the cessation of all activities as identified in #3 above.

4. Operating motorized vehicles off designated roads and trails.

Stage II Exemptions:

1. Persons with a written permit that specifically authorizes the otherwise prohibited act.
2. Persons using a device solely fueled by liquid petroleum or LPG fuels that can be turned on and off. Such devices can only be used in an area that is barren or cleared of all overhead and surrounding flammable materials within 3 feet of the device.
3. Operating generators with an approved spark arresting device within an enclosed vehicle or building or in an area that is barren or cleared of all overhead and surrounding flammable materials within three feet of the generator.
4. Operating motorized vehicles on designated roads and trails.
5. Emergency repair of public utilities and railroads as per attached conditions
6. Persons conducting activities in those designated areas where the activity is specifically authorized by written posted notice.
7. Any Federal, State, or local officer, or member of an organized rescue or firefighting force in the performance of an official duty.
8. All land within a city boundary is exempted.
9. Other exemptions unique to each agency/tribe.

Violations:

- Individuals could be fined up to \$5,000 individually or \$10,000 for an organization and/or imprisoned up to 12 months for violating restrictions and closures.
- Individuals can be held liable for all suppression costs and damages if they start a fire.

STAGE II RESTRICTIONS (Alternative template based on current USDA Forest Service format)

The Following Acts Are Prohibited Until Further Notice:

1. Building maintaining, attending, or using a fire or campfire.
2. Smoking, except within an enclosed vehicle or building, a developed recreation site or while stopped in an area at least three feet in diameter that is barren or cleared of all flammable materials.
3. Operating any internal combustion engine.
4. Welding, or operating acetylene or other torch with open flame.
5. Explosives*
6. Operating motorized vehicles off designated roads and trails.

Stage II Exemptions:

1. Persons with a special use authorization or authorization specifically exempting them from the effect of this Order. If the authorization allows operation of an internal combustion engine or welding or operating an acetylene or other torch with open flame, such acts **are prohibited from the hours of 1:00 p.m. to 1:00 a.m.** Outside of these hours, a one-hour foot patrol in the work area is required following cessation of these activities.
2. Persons using a device solely fueled by liquid petroleum or LPG fuels that can be turned on and off. Such devices can only be used in an area that is barren or cleared of all overhead and surrounding flammable materials within 3 feet of the device.
3. Operating generators with an approved spark arresting device within an enclosed vehicle or building or in an area that is barren or cleared of all overhead and surrounding flammable materials within three feet of the generator.
4. Operating motorized vehicles on designated roads and trails.
5. Emergency repair of public utilities and railroads as per attached conditions.
6. Persons conducting activities in those designated areas where the activity is specifically authorized by written posted notice.
7. Any federal, State, or local officer, or member of an organized rescue or firefighting force in the performance of an official duty.
8. All land within a city boundary is exempted.
9. Other exemptions unique to each agency/tribe.

*Please note that explosives and fireworks are prohibited at all times on all federal lands. Fireworks (MCA 36-10-128), "Flaming and Glowing Substances" (MCA 36.10.127) and "Throwing Lighted Materials" (MCA 76-13-124) are prohibited on state and private-classified-as-forested lands within the state of Montana, though exemptions may occur for fireworks. In the state of Montana, exploding targets such as Tannerite are prohibited when fire danger is high, very high, or extreme (MCA 77-1-118).

Violations:

- Individuals could be fined up to \$5,000 individually or \$10,000 for an organization and/or imprisoned up to 12 months for violating restrictions and closures.
- Individuals can be held liable for all suppression costs and damages if they start a fire.

SMALL-SCALE CLOSURE

The following acts are prohibited until further notice:

Going into or being upon the following described areas without a written permit: (Description of area)

Exemptions:

1. Actual residents going to or from their home.
2. Persons traveling on paved and numbered highways.
3. Persons occupying designated improved campgrounds immediately adjacent to such highways.
4. Any Federal, State, or local official, or member of an organized rescue or firefighting force in the performance of an official duty.

Appendix H Signature Pages

We agree to the Missoula Area Fire Restrictions and Closure Plan for 2023-2025.

Carolyn Upton
Forest Supervisor
Lolo National Forest

Date

Matt Anderson
Forest Supervisor
Bitterroot National Forest

Date

Mike O'Herron
Area Manager
DNRC Southwestern Land Office

Date

Greg Poncin
Area Manager
DNRC Northwestern Land Office

Date

Erin Carey
Field Manager
Missoula Field Office
Bureau of Land Management

Date

Lindsey Babcock
Field Manager
Butte Field Office
Bureau of Land Management

Date

Tom McDonald
Tribal Council Chairman
Confederated Salish and Kootenai
Tribes

Date

Bryan Mercier
Date
Northwest Regional Director
Bureau of Indian Affairs

Date

Tom Reed
Refuge Manager
Lee Metcalf National Wildlife Refuge
U.S. Fish and Wildlife Service

Date

Sean O'Conner	Date
Fire Warden	
Granite County	

Mark Clary	Date
Fire Warden	
Lake County	

Mary Jo Lommen	Date
Fire Warden	
Mineral County	

Adriane Beck	Date
Fire Warden, OEM	
Missoula County	

Andy Scharf	Date
Fire Warden	
Powell County	

Brad Mohn	Date
Fire Warden	
Ravalli County	

Bill Naegli	Date
Fire Warden, DES	
Sanders County	

Lincoln Chute	Date
Fire Warden	
Flathead County	

Plan is effective on the date of the first signatures for those agencies that have signed.